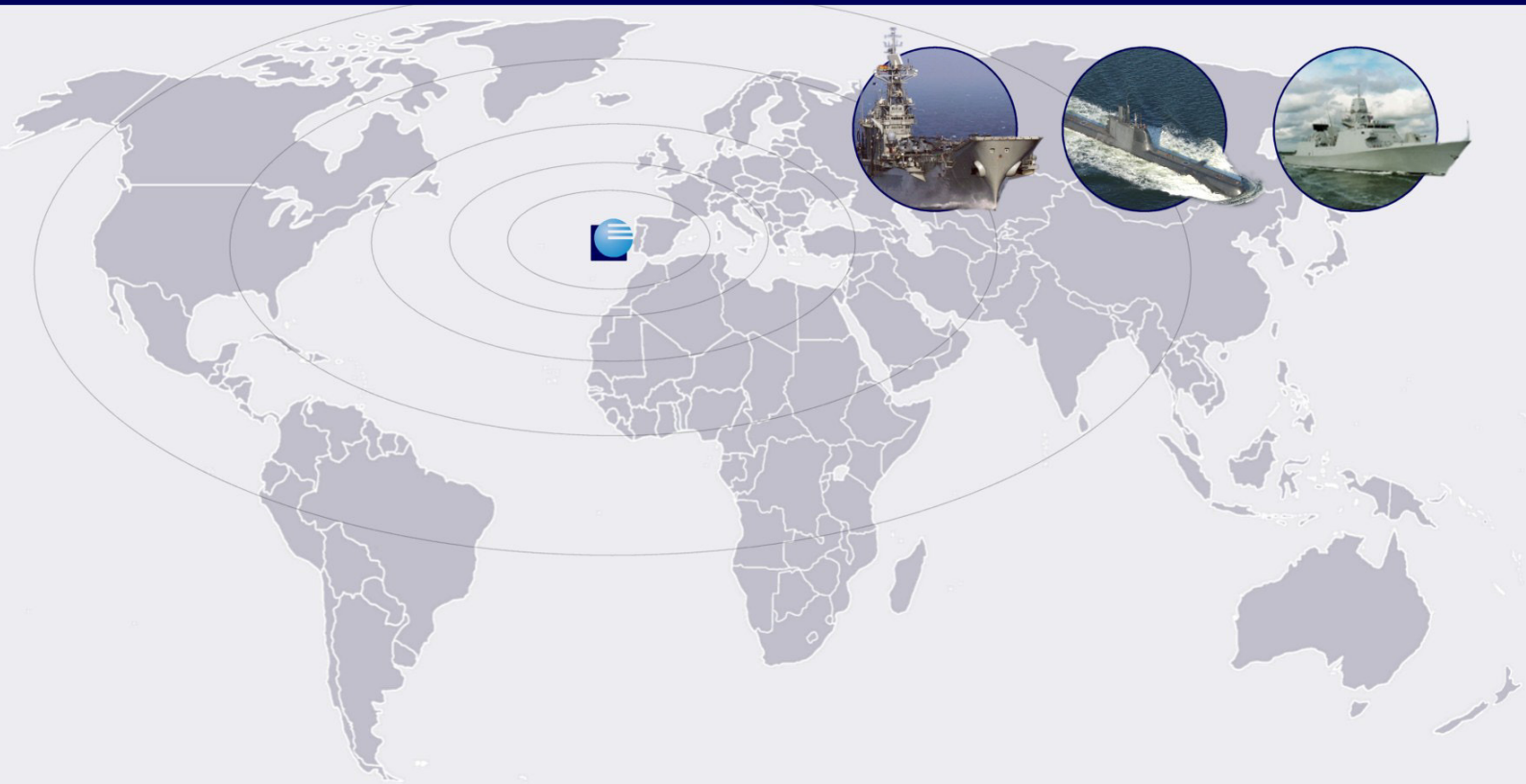


# WS810

workstation



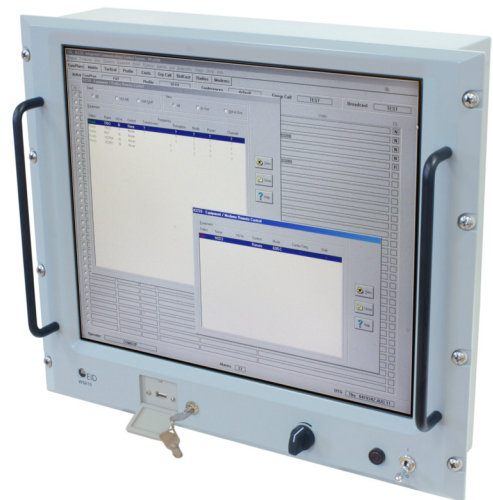
The workstation **WS810** is a rugged computer suitable for shipboard installation. Basically, the unit is composed of a processing unit and a 19" high-resolution 1280x1024 flat-panel colour LCD display.

With a compact design, the installation of the **WS810** is extremely simple, either from the mechanical or electrical standpoint.

The flat panel luminance control, power switch, protection fuse and a lockable USB port are conveniently located on the front panel.

The power, keyboard, mouse and two Ethernet connectors are located on the rear panel.

The **WS810** display provides optimum visibility and comfortable operation, as well as its inherent reliability, low susceptibility to magnetic fields and economy of installation space.



**Figure – WS810**

The specifications of the **WS810** are the following:

|                   |   |
|-------------------|---|
| Power supply      | 115/230Vac, 50/60Hz                           |
| Power consumption | 100 VA  |
| CPU               | Intel Atom                                    |
| Memory            | 2 Gbytes                                      |
| Operating system  | Windows™ XP Embedded                          |
| Monitor           | 19" colour LCD                                |
| Resolution        | 1280x1024                                     |
| Solid-state disk  | 2.5", withstanding shocks up to 1500 g        |
| Mass memory port  | USB   |
| Temperature range | 0 – 50°C                                      |
| Vibration         | MIL-STD-167                                   |
| Weight            | 10.5 kg approx.                               |
| Dimensions        | 483 (W) x 399 (H) x 170 (D) mm w/o connectors |